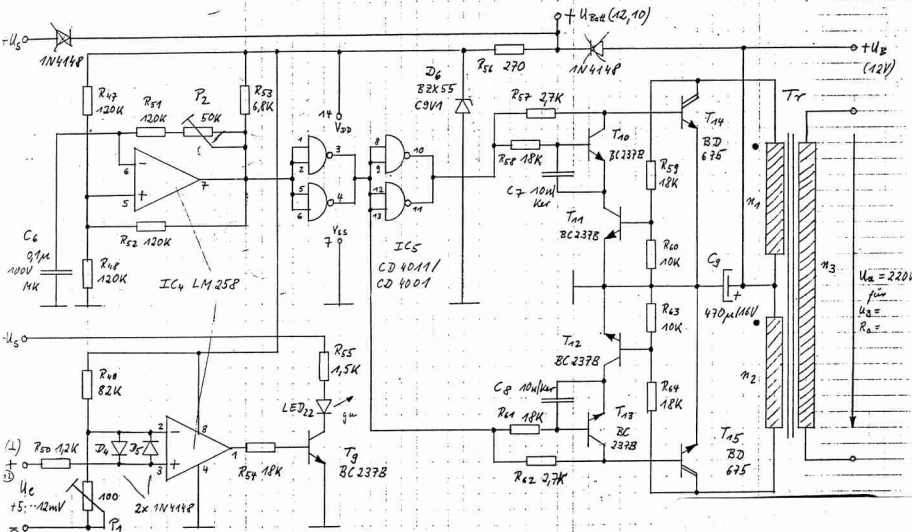


220V/50Hz - 10KW Wandler und Thermospannungsmessung



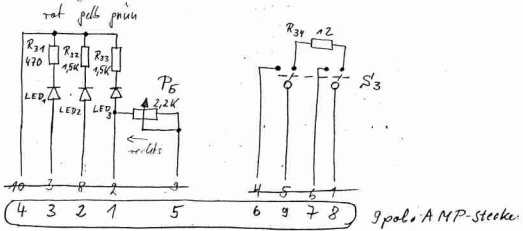
Trafo: M42x23 (hoch)  
 Signum-Blech II, 0,35mm  
 o.L.

$n_1, n_2$  : 150 Wdg.; 0,45 Cml, bifilar  
 $n_3$  : 3400 Wdg.; 0,1 Cml

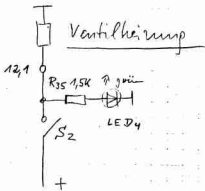
$U_a = 220V$   
 für  
 $U_g =$   
 $R_a =$

9/5/70

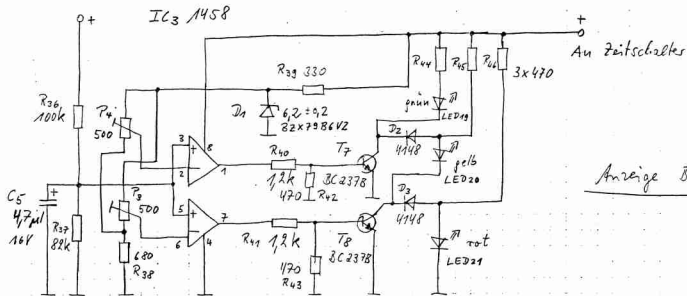
# Schaltung Boiler



12-pol.  
AMP-St.

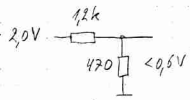


04913



Anzeige Batterie

rot/gelb : 11,5V  
 gelb/grün : 12,0V



4/1540